

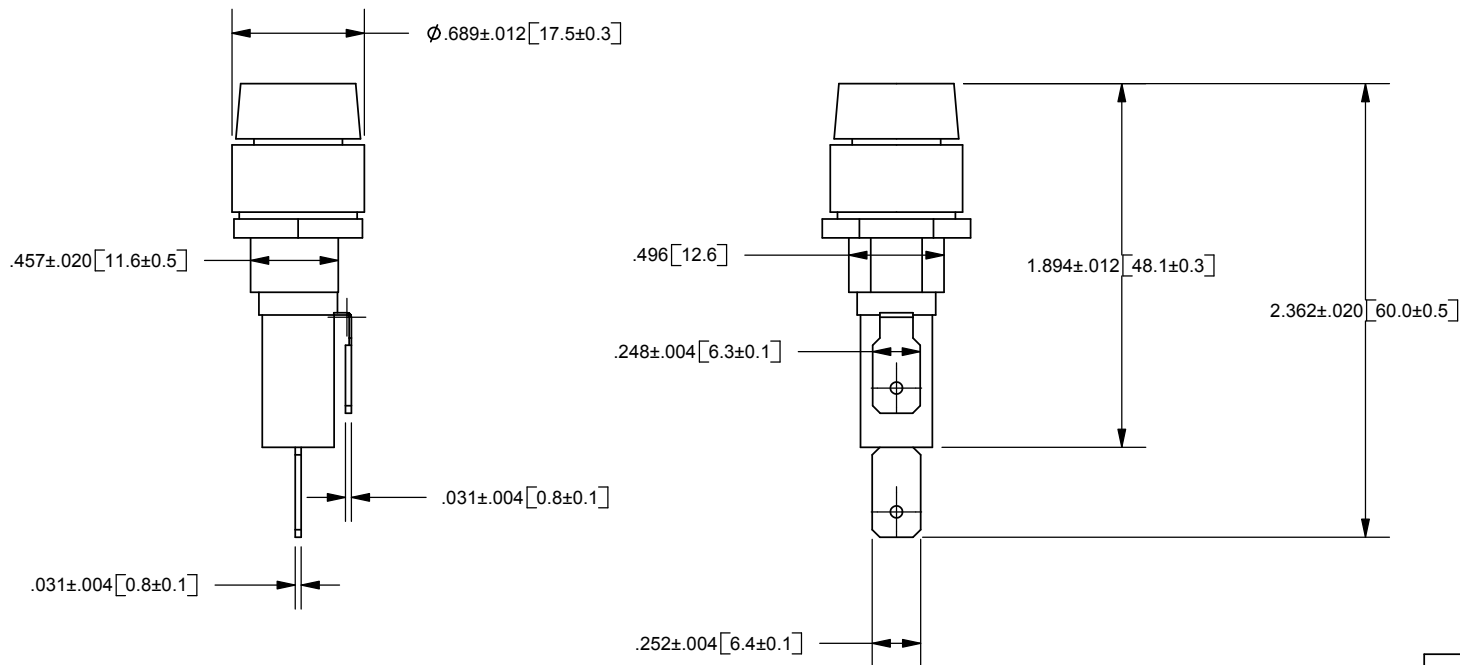
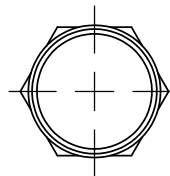
REV	DATE	ECO	DESCRIPTION	BY	CK	APP
-	10-25-05	NA	INITIAL RELEASE	LDB	NA	NA

NOTES:

FUSE HOLDER PANEL MOUNT TYPE FOR 6.3X30mm AND 6.3X32mm FUSES UL & CSA APPROVED.

SPECIFICATIONS:

- \* ELECTRICAL: RATED AT 10A 250V AC
- \* INSULATING BODY: BAKELITE
- \* KNOB: INSERT STYLE FUSE EXTRACTOR TYPE WITH NICKEL-PLATED COPPER ALLOY INSERT. SPRING LOADED.
- \* TERMINALS: NICKEL-PLATED COPPER ALLOY, SOLDER TYPE. STRAIGHT TERMINAL.



DIMENSIONS IN [ ] ARE MILLIMETERS



FERRAZ SHAWMUT INC.  
374 MERRIMAC STREET  
NEWBURYPORT, MA 01950

GPM-G5  
FUSEHOLDER  
6.3X30mm and 6.3X32mm  
10A 250VAC

OUTLINE DIMENSIONS  
NOT TO BE USED FOR PRODUCTION

701225

PRODUCT MANAGER  
SIGN:  
DATE:

DESIGN ENGINEER  
SIGN:  
DATE: