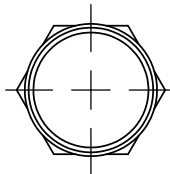


REV	DATE	ECO	DESCRIPTION	BY	CK	APP
-	10/25/05	NA	INITIAL RELEASE	LDB	NA	NA

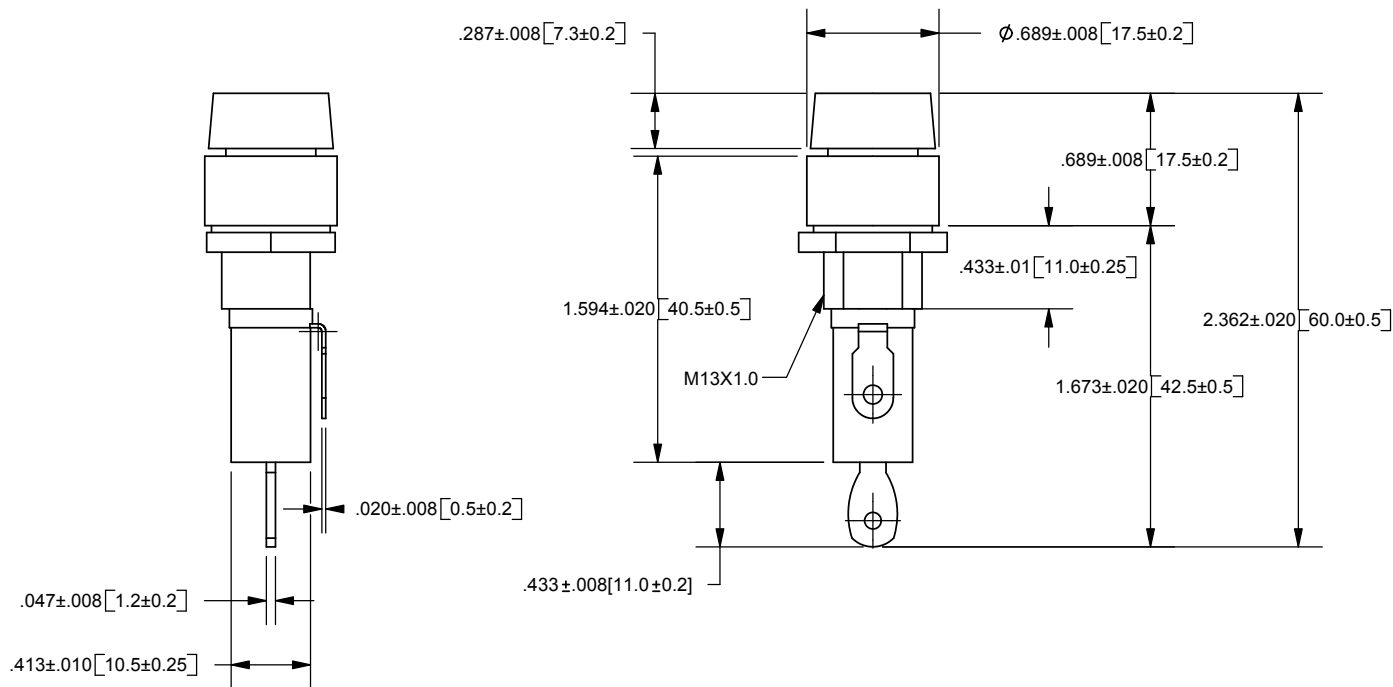


NOTES:

FUSE HOLDER PANEL MOUNT TYPE FOR 6.3X30mm AND 6.3X32mm FUSES UL & CSA APPROVED

SPECIFICATIONS:

- * ELECTRICAL: RATED AT 10A 250V AC
- * INSULATING BODY: BAKELITE
- * KNOB: INSERT STYLE FUSE EXTRACTOR TYPE WITH NICKEL-PLATED COPPER ALLOY INSERT.
- * TERMINALS: NICKEL-PLATED COPPER ALLOY, STRAIGHT ANGLE, TERMINAL SOLDER TYPE.
- * APPROVALS: UL, CSA



DIMENSIONS IN [] ARE MILLIMETERS



FERRAZ SHAWMUT INC.
374 MERRIMAC STREET
NEWBURYPORT, MA 01950

GPM-G6

FUSEHOLDER
6.3X30mm and 6.3X32mm

10A 250VAC

OUTLINE DIMENSIONS
NOT TO BE USED FOR PRODUCTION

701226

PRODUCT MANAGER

SIGN:

DATE:

DESIGN ENGINEER

SIGN:

DATE: